

# **GIS-SP Challenges**

## **São Paulo City GIS**

# Speaker

Silvio Cesar Lima Ribeiro

## Academic background:

Survey Engineer  
MSc Geoprocessing  
Partial PhD

UFV 1990  
EPUSP 1995  
EPUSP

## Experience:

Municipality SP (since 1991)  
Teaching (since 1997)

Planning, Environment, Housing, Urban Development (now)  
Environmental Manage, Oceanography, Oil & Gas, Civil Eng. (now)

# Abstract

- Increasing GIS technology.
- Sao Paulo mega city grows in solutions and in problems too.
  - Infrastructure: What we need?
  - Political visibility: What they want?
  - Applicability: What we want?
- Calibrating the GIS-SP master plan to the future

# Premises in GIS master plan

- **Corporate data base** with City Digital Map implementation
- Data base **Integration**
- **Strategic decision** improvement

# Decree

- Decree nº 50.736 (15/07/2009) to GIS-SP
- Objective  
Production, maintenance, analysis, dissemination and publishing mapped information in order to support planning, implementation and public policy management.

# Legal structure

Decree n. 50.736/09

**Managing council – Decision makers**

Urban Development, Govern, Planning, Finance and TI Co.

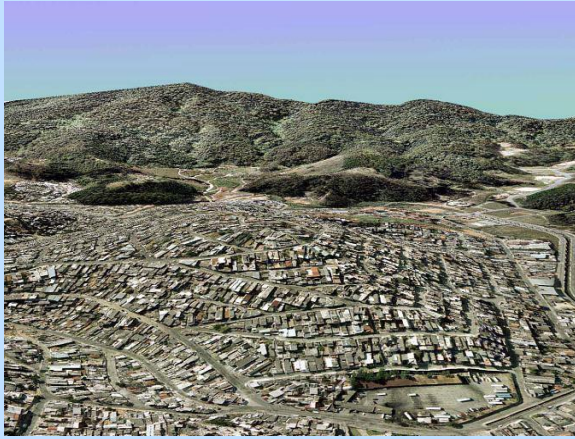
Strategic and policy level

**Intersecretarial Technical Group**

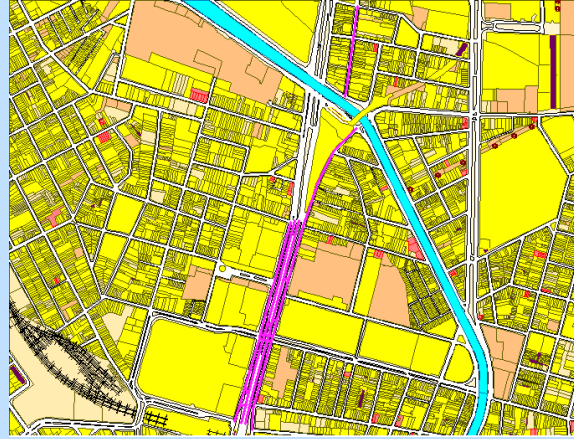
Technical body from same organisations

**More Secretariats and Municipal Co.**

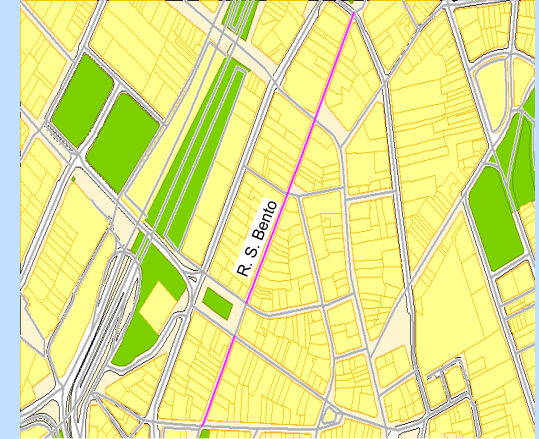
# City Digital Map



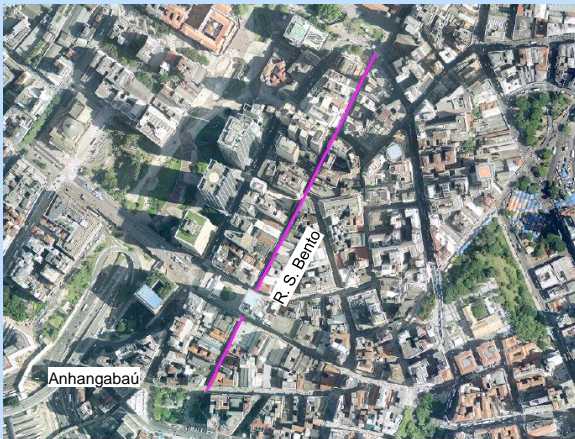
**Relief / DTM**



**Center lines**



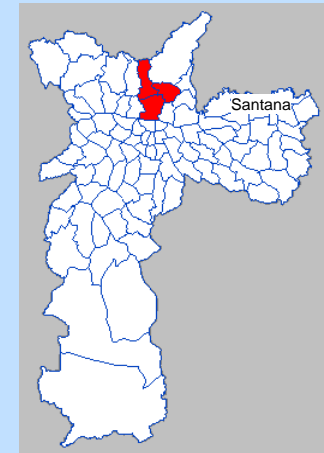
**Streets**



**Ortophoto**



**Parcels & Buildings**



**Districts & Adm. Subregions**

# GIS master plan

## Distribution Action

- Cartographic Base Map

[http://www.prefeitura.sp.gov.br/cidade/secretarias/desenvolvimento\\_urbano/dados\\_estatisticos/](http://www.prefeitura.sp.gov.br/cidade/secretarias/desenvolvimento_urbano/dados_estatisticos/)

- Corporate GEO Portal
- GeoWeb



# Roles

- Urban Planner
- Work Engineer
- Sociologist
- Geographer
- Geologist
- Business
- Architect

Information Systems

# Emphasis

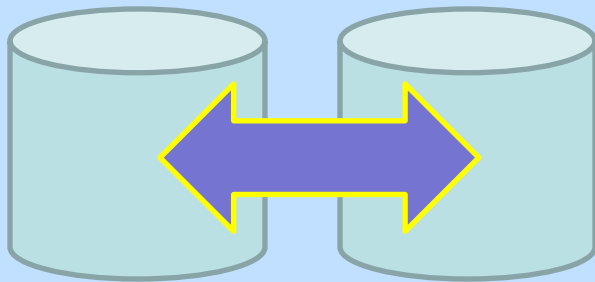
- Sharing
- Corporate solution
- Integration
- Interoperability

# Interoperability

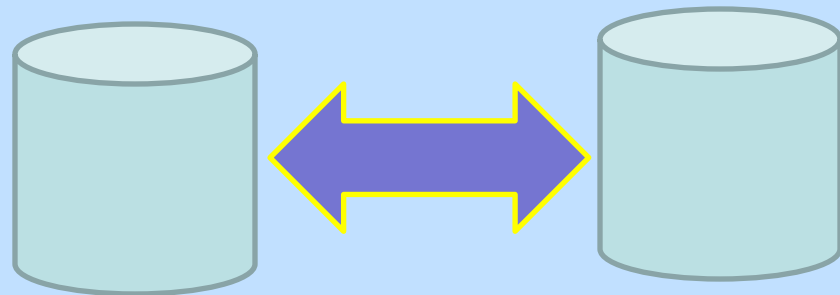
- E-Governance
- Spatial Data Infrastructure
- Standardization

# Interoperability x Compatibility

Interact & Use  
Information  
SERVICES



Output & Input  
Information  
TRANSFER



# Interoperability types

- Syntactic = common language
- Semantic = automatic interpretation
- Technical = interfaces, services, middleware
- Organizational = business, colaboration

# Concept x Reality

- Syntactic ... looks like simple
- Semantic ... not so simple
- Technical ... the simplest
- Organizational ... a lack of communication

# Dilema



# TECNOLOGY

# Future



# INFRASTRUCTURE



# Undesirable



# Challenges

# TECHNOLOGY



# Municipality Rule

- Megacity challenges (axes)
  - Social cohesion
  - Urban development
  - Environmental improvement
  - Mobility and accessibility
  - Business opportunities

# Thank you



Silvio Ribeiro

Coordinator GTI – SIG-SP

Dipro/SMDU/PMSP

[sribeiro@prefeitura.sp.gov.br](mailto:sribeiro@prefeitura.sp.gov.br)